

KORLOY ADN5160R D8A

New

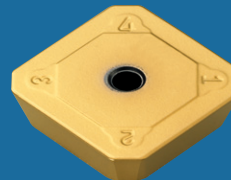
Powerful
ISO Milling
Insert

PC3500-SU

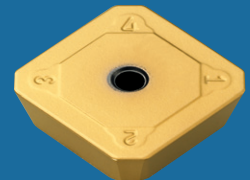


Features

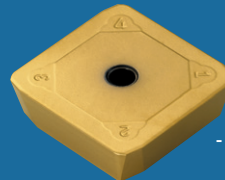
- Improving productivity and efficiency
- The latest, PVD layer technology applied
- Best solution for various workpiece and machining
- Universal insert for all materials(P,M,K)



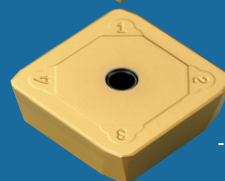
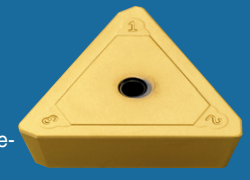
SEKN-SU



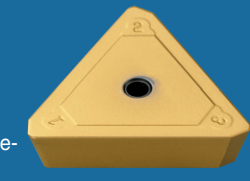
SDKN-SU



-L Type-



-R Type-



SPKN-SU

TPKN-SU

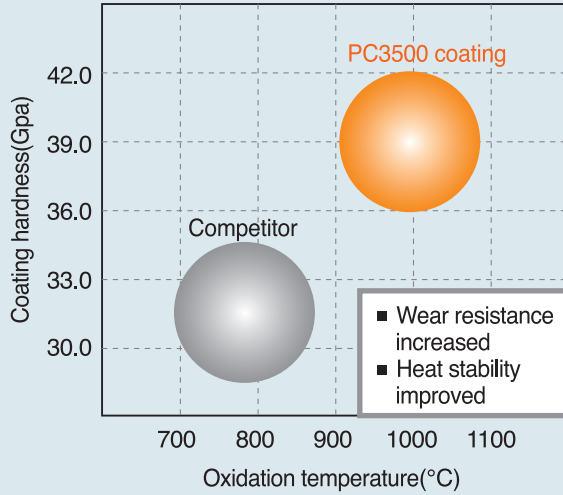


PC3500-SU Powerful ISO Milling Insert

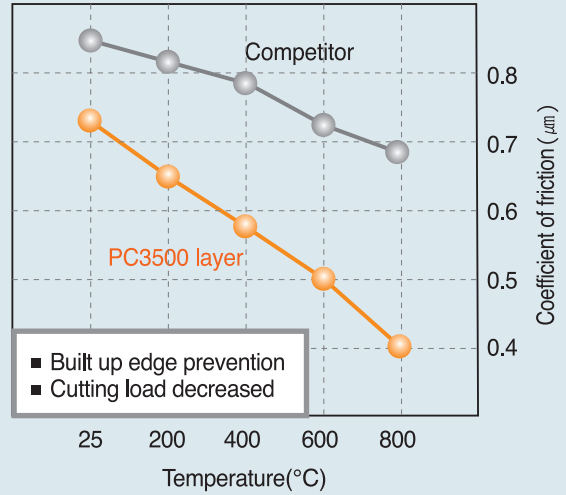
The combination of tough substrate and high hardness coating layer

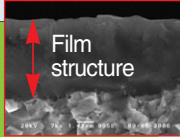
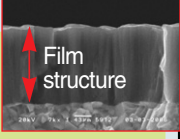



The combination of tough substrate and high hardness coating layer

● Oxidation temperature & coating hardness

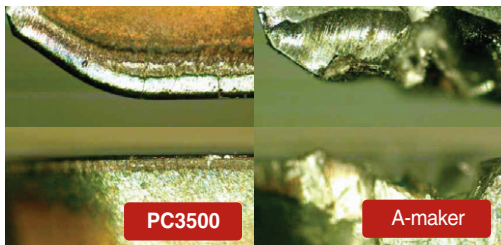


● Temperature and coefficient of friction

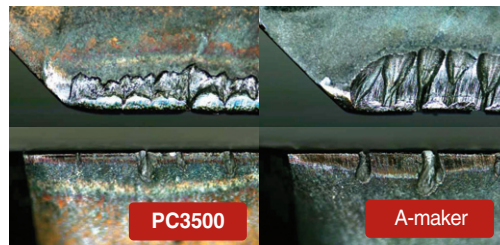


RPM	ISO	Continuous condition	General condition	Interrupted condition
High speed machining	10			
↑	20	PC3500 ● High speed/General, interrupted cutting condition ● Universal(Alloy steel/Mould steel/Carbon steel/Cast iron) ● Tough substrate + PC3500 coating		 Film structure
	30			 Film structure
Low speed machining	40		● Low speed/interrupted PC3545 coating ● Primary for alloy steel(SCM, SM, SS) ● Tough substrate + K-GOLD applied	
Workpiece shape				

- Designation : SPKN1203EDSR-SU
- Cutting condition : Mould steel(D2(SKD11))
- vc=984sfm, fz=0.078inch/t, ap=0.78inch, dry



- Designation : SDKN1504AESN-SU
- Cutting condition : Alloy steel(4140(SCM440))
- vc=984sfm, fz=0.16inch/t, ap=0.78inch, dry

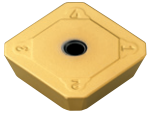
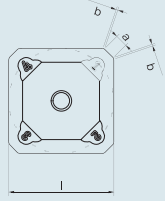
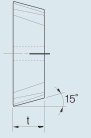
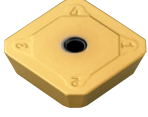
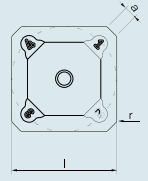
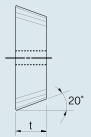
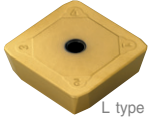
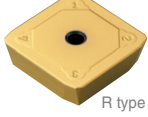
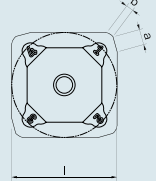
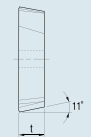

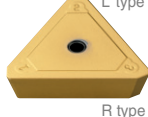
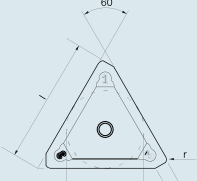
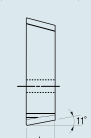




PC3500-SU Powerful ISO Milling Insert

Stock item

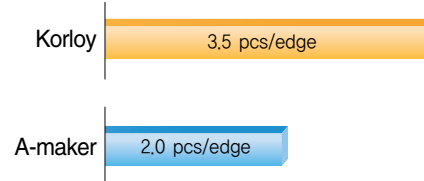
Stock item

Insert	Designation	Dimensions					Geometry	Available tool		
		l	t	d	a	b		Designation	No. of tooth	
 SDKN-SU	SDKN42AESN-SU	1/2	1/8	-	0.065	0.023	 	ADNA	4300R/L 4400R/L 4500R/L 4600R/L 4800R/L 41000R/L 41200R/L	4 5 6 8 10 12 14
	SDKN53AESN-SU	5/8	3/16	-	0.065	0.023		ADNA	5300R/L 5400R/L 5500R/L 5600R/L 5800R/L 51000R/L 51200R/L	4 5 6 8 10 12 14
 SEKN-SU	SEKN42AFSN-SU	1/2	1/8	-	0.065	-	 	AEA	4300R/L 4400R/L 4500R/L 4600R/L 4800R/L 41000R/L 41200R/L	4 5 6 8 10 12 15
	SEKN53AFSN-SU	5/8	3/16	-	0.065	-		AEA	5300R/L 5400R/L 5500R/L 5600R/L 5800R/L 51000R/L 51200R/L	4 5 6 8 10 12 15
 L type  R type SPKN-SU	SPKN42EDSR/L-SU	1/2	1/8	-	0.065	0.036	 	EPNA	4300R/L 4400R/L 4500R/L 4600R/L 4800R/L 41000R/L 41200R/L	5 6 8 10 12 16 20
	SPKN53EDSR/L-SU	5/8	3/16	-	0.065	0.036		EPNA	5300R/L 5400R/L 5500R/L 5600R/L 5800R/L 51000R/L 51200R/L	5 6 8 10 12 16 20
 L type  R type TPKN-SU	TPKN32PDSR/L-SU	0.650	1/8	3/8	0.067	-	 	-	-	-
	TPKN43PDSR/L-SU	0.866	4.76	1/2	0.075	-		PPNA	4300R/L 4400R/L 4500R/L 4600R/L 4800R/L 41000R/L 41200R/L	5 6 8 10 12 16 20



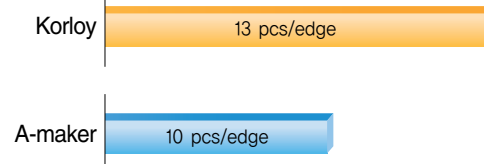
● Case 1 Mould base machining

- workpiece : 4140(SCM440)
- vc : 580 sfm
- fz : 0.03 inch/t
- ap : 0.78 inch
- Korloy : SPKN42EDSR-SU PC3500
- A-maker : SPKN42EDTR-□□ P30 Grade



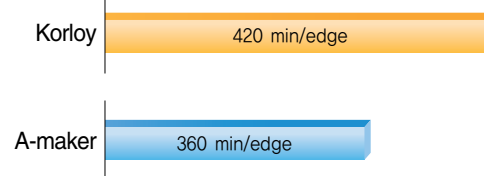
● Case 2 Metal plate machining

- workpiece : KP4M(Mold steel)
- vc : 921 sfm
- fz : 0.04 inch/t
- ap : 1.57~2.36 inch
- Korloy : SDKN53AESN-SU PC3500
- A-maker : SDKN53MT-□□ P30 Grade



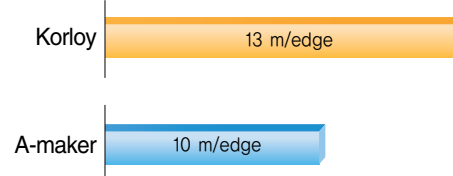
● Case 3 Large-sized facility body machining

- workpiece : SS40(Soft steel)
- vc : 823 sfm
- fz : 0.08 inch/t
- ap : 1.18 inch
- Korloy : SPKN53EDSR-SU PC3500
- A-maker : SPKN53EDTR-□□ P30 Grade



● Case 4 Machine tool spindle machining

- workpiece : 1045(S45C)
- vc : 459 sfm
- fz : 0.028 inch/t
- ap : 1.57 inch
- Korloy : TPKN43PDSR-SU PC3500
- A-maker : TPKN43PDTR-□□ P30 Grade



● Case 5 Ship con-rod machining

- workpiece : 1045(SM45C)
- vc : 741 sfm
- fz : 0.055 inch/t
- ap : 1.97 inch
- Korloy : TPKN43PDSR-SU PC3500
- A-maker : TPKN43PDTR-□□ P30 Grade

